

The Development of ITS System Architecture

Introduction

- The ITS System Architecture Study is in tandem with the recommendation made by the ITS Master Plan Study which was completed in July 2003
- HMSP was commissioned to undertake the study starting 1 June 2006 till 31 May 2007 (12 months)
- The Final Report was submitted to the Government in May 2007
- In addition to 3 Reports (Inception, Interim and Draft Final) the study team had also submitted 7 Technical Notes to the Government

The Development of ITS System Architecture

Technical Notes

- **TN #1:** Formulation of Design Framework for ITS SA for Malaysia
- **TN #2:** The Logical Architecture Framework for ITS SA for Malaysia
- **TN #3:** Subsystems and Terminators
- **TN #4:** The Physical Architecture Framework for ITS SA for Malaysia
- **TN #5:** The Deployment Packages Framework for the ITS SA for Malaysia
- **TN #6:** Recommendation on Adoption of Critical ITS Standards for Malaysia
- **TN #7:** The Maintenance Strategy for the ITS SA for Malaysia

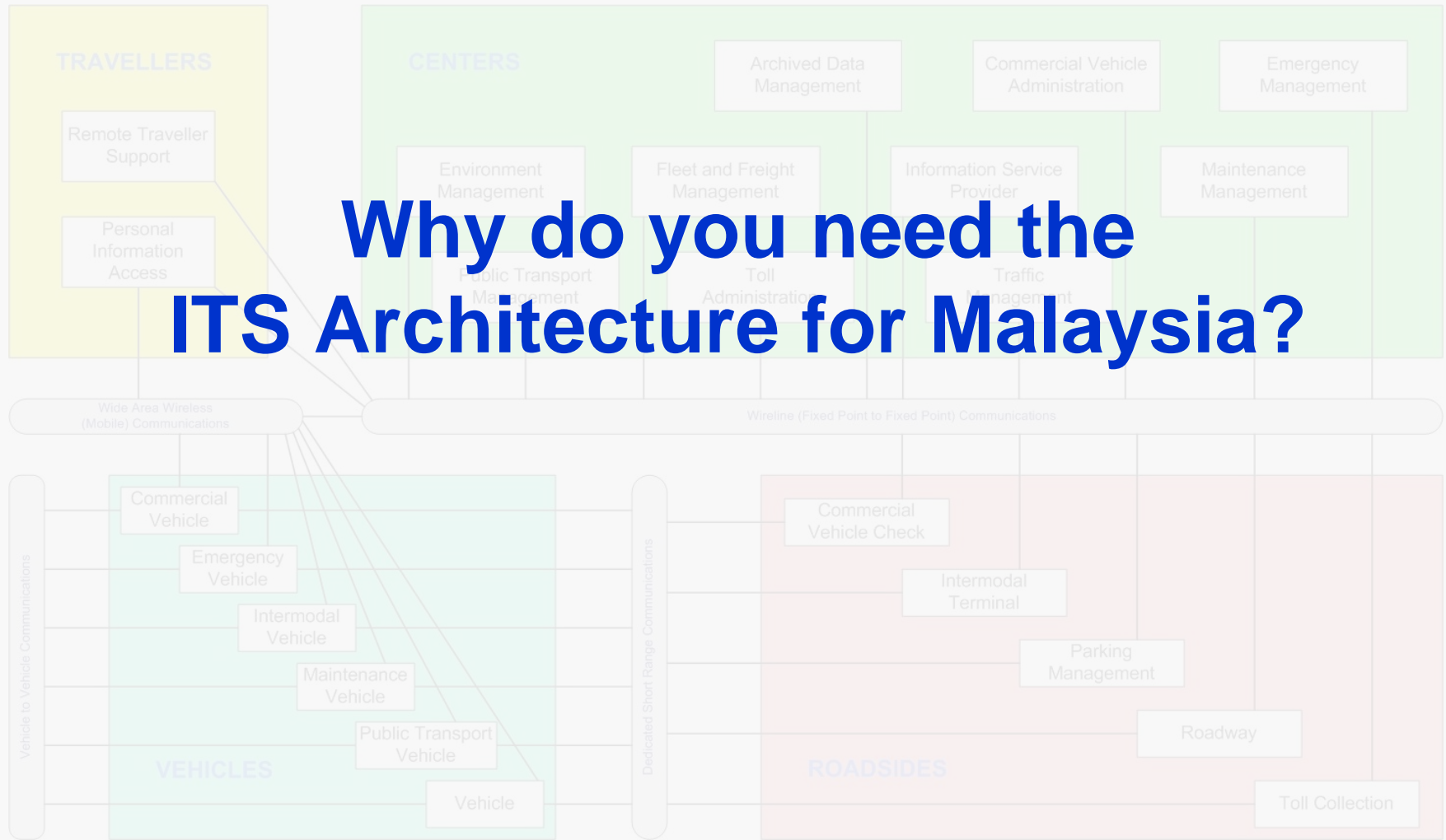


The Development of ITS System Architecture

Objectives of the Study

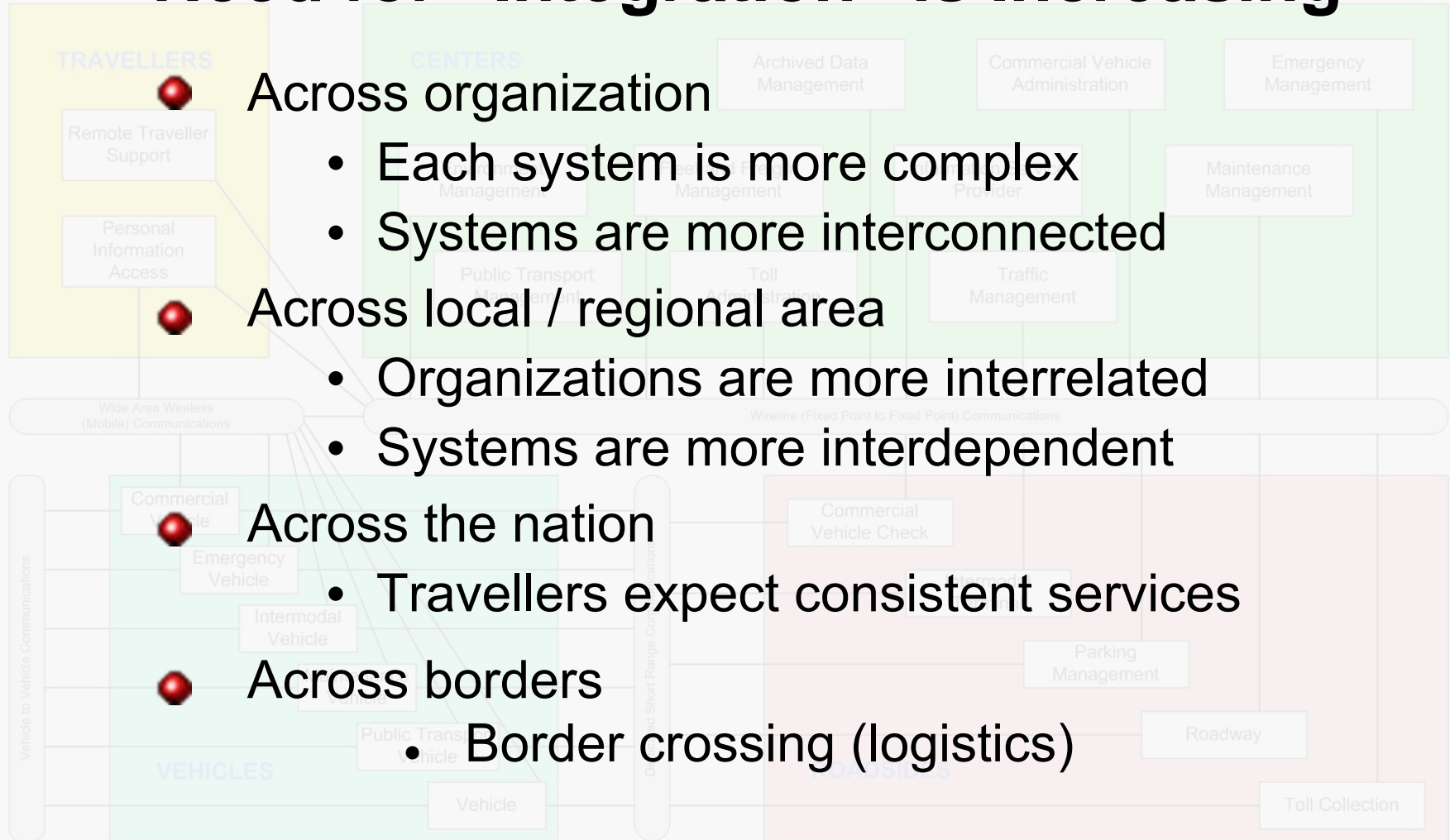
- To define, design and develop an ITS system architecture as to promote unity and ensure inter-operability in the deployment of ITS across modes throughout Malaysia and its region.
- Provide a framework where all the components and interconnections are identified
- Provides the communication and information backbone that supports and unites the key ITS technologies as to enable them to work together and communicate with each other
- Identifies a unifying standards needed to support inter-operability across technology modes and jurisdiction.

The Development of ITS System Architecture



The Development of ITS System Architecture

Need for “Integration” is Increasing



● Across organization

- Each system is more complex
- Systems are more interconnected

● Across local / regional area

- Organizations are more interrelated
- Systems are more interdependent

● Across the nation

- Travellers expect consistent services

● Across borders

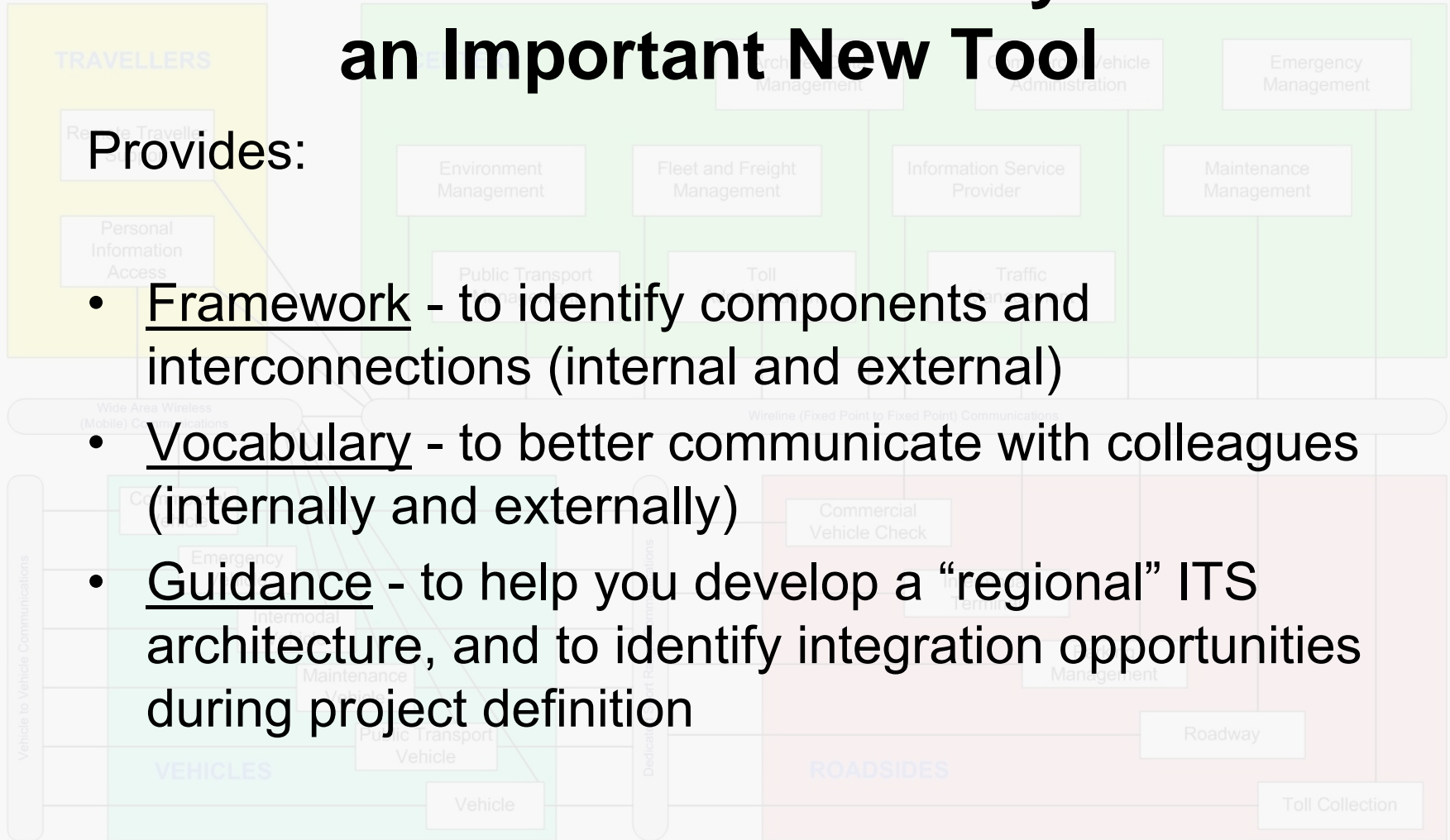
- Border crossing (logistics)

The Development of ITS System Architecture

ITS Architecture for Malaysia is an Important New Tool

Provides:

- Framework - to identify components and interconnections (internal and external)
- Vocabulary - to better communicate with colleagues (internally and externally)
- Guidance - to help you develop a “regional” ITS architecture, and to identify integration opportunities during project definition



The Development of ITS System Architecture

The ITS Architecture for Malaysia

is NOT . . .

- A design document
- An institutional or development process
- Technology prescriptive . . .

Design View

GPS Receiver

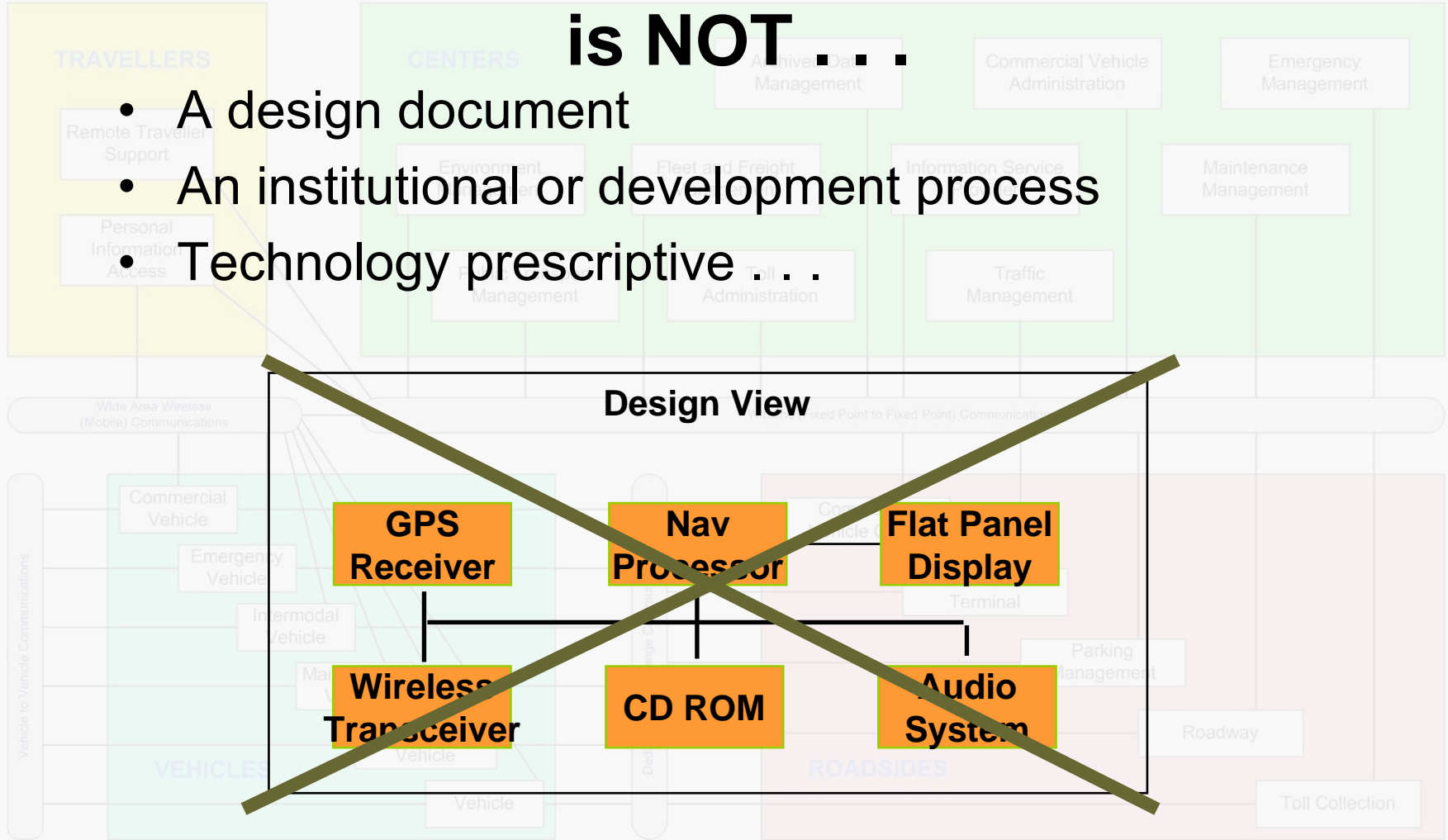
Nav Processor

Flat Panel Display

Wireless Transceiver

CD ROM

Audio System



The Development of ITS System Architecture

Tasks

